



How to select good **LAMINATE FLOORING**

www.bergeimfloors.com



Bergeim Facebook



Bergeim Wechat

A Subsidiary of Yekalon Group

Add.: 3rd Floor, Jinxiu Bldg., Wenjin Middle Road, Luohu District, Shenzhen, 518003, P.R.China
Tel: 0086-755-25160926/21527355 Fax: +86 755 25419568 Email: webmaster@yekalon.com
Yekalon Web: www.yekalon.com Bergeim Web: www.bergeimfloors.com

Five tests to distinguish the

HDF panel quality





Normal flooring HDF fiber

- Materials: mixed woods
- Color: dark
- Structure: non-uniform and loose
- Smell: pungent smell of glue or no smell
- Touch: rough, have granular sensation
- Glue: artificial glue
- Quality: easy to break



Bergeim Freshened pine HDF fiber

- Materials: pine
- Color: golden
- Structure: uniform and compact
- Smell: good pine aroma
- Touch: smooth, no granular sensation
- Glue: natural pine glue
- Quality: hard to break



NORMAL

HDF Color: Dark
Fiber: Rough



BERGEIM

HDF Color: Golden
Fiber: Smooth

**NORMAL**

Normal HDF Core: No smell or
Pungent smell of glue

**BERGEIM**

Freshened Pine HDF Core:
Good pine fragrance

**NORMAL**

The smoke of burned normal sample is choking,
no smell of wood but pungent smell

**BERGEIM**

The smoke of burned Bergeim sample is mild
with normal woody smell

■ **Condition:** both are in the same size

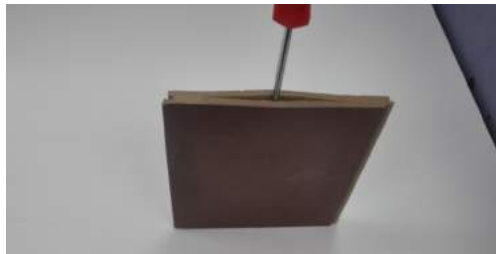
**NORMAL**

HDF Weigh : 148g
Size: 100*150*16mm

**BERGEIM**

HDF Weigh: 159g
Size: 100*150*16mm

■ Splitting the board with hammer & screwdriver



NORMAL



BERGEIM

■ After the splitting



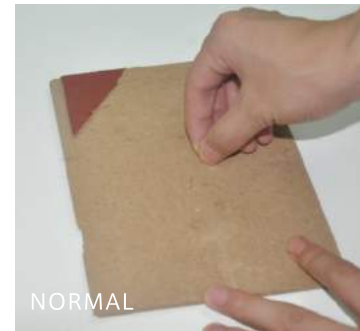
① NORMAL

HDF Color: Dark
Fiber: Rough

② BERGEIM

HDF Color: Golden
Fiber: Smooth

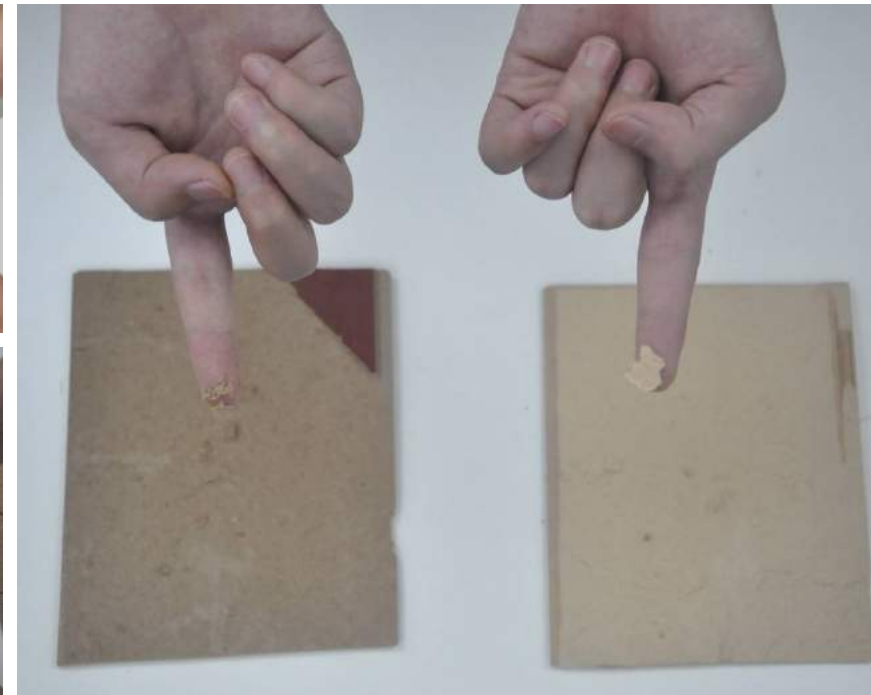
■ Tearing the board to see the quality of HDF



NORMAL



BERGEIM

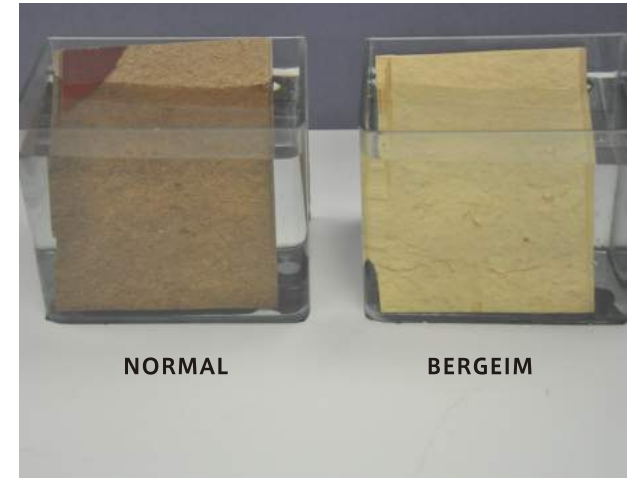


**NORMAL**

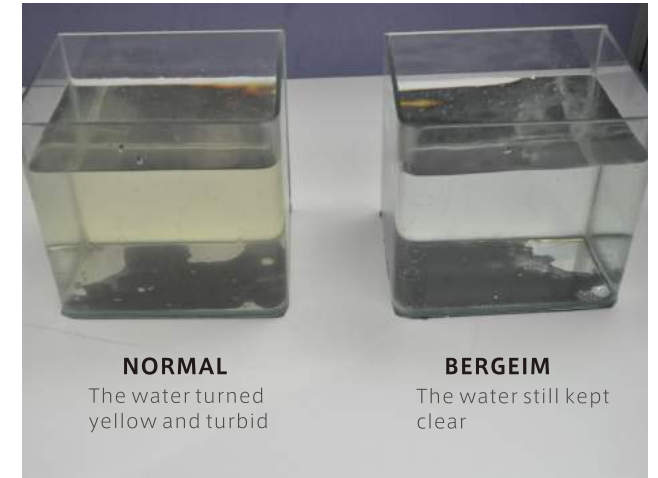
Color: The color depth varies, some dark, some light, even with dark brown spots
Touch: Rough, have granular sensation
Structure: Non-uniform and loose

BERGEIM

Color: Golden
Touch : Smooth, no granular sensation
Structure: Uniform and compact

**NORMAL****BERGEIM**

Soaking the boards in the water

**NORMAL**

The water turned yellow and turbid

BERGEIM

The water still kept clear

After soaking in the water for 12 hours



NORMAL

The deformation of NORMAL HDF is serious after soaking for a half day.



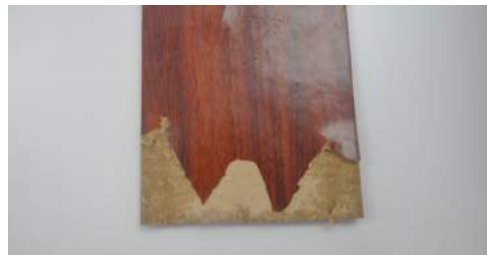
BERGEIM

The deformation of Bergeim freshened pine HDF is slight after soaking for a half day.



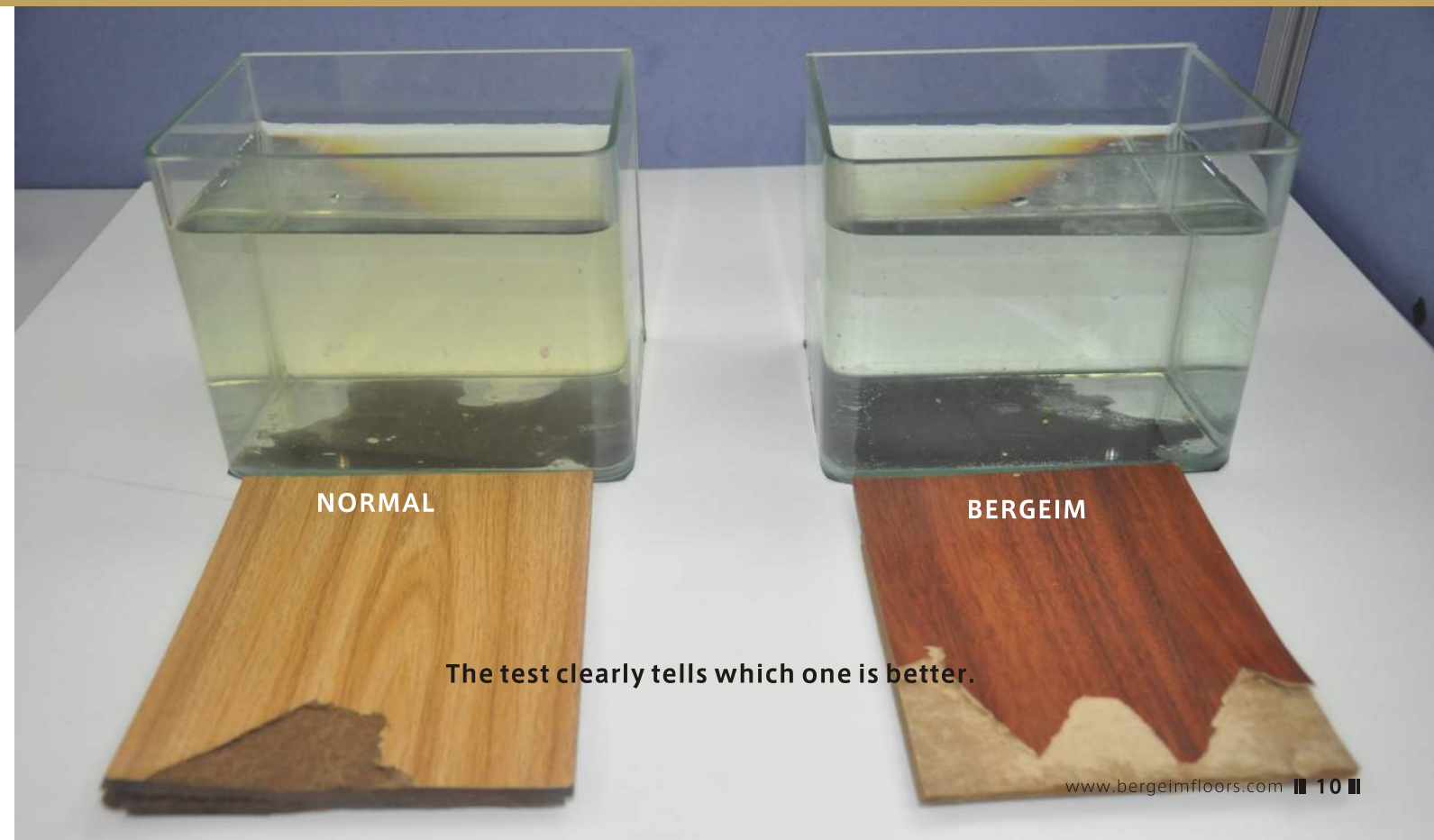
NORMAL

The water completely permeated through the board.



BERGEIM

The water partly permeated through the board.



Why?

Analysis of causes

Normal laminate flooring:

The HDF of normal laminate flooring is made by mixed woods, such as poplar, weedtree and bush. The color of these HDF are dark brown. The materials are light and has no oil or less oil with poor function of water proof. It needs much more glue to bond the fiber, thus it contains more formaldehyde.

Bergeim Floors:

The HDF of Bergeim laminate flooring is made by wet-land pine. Pine materials are heavier and have long growth period and wood fragrance. The wood chip is oily and ductile, and the fiber is thin and long, so it could easily bond each other by themselves. Thus the performance of water proof is much better. What's more, less glue was needed to bond the fiber, thus it contains less formaldehyde.



The freshened pine HDF of
Bergeim Floors
is beyond compare.